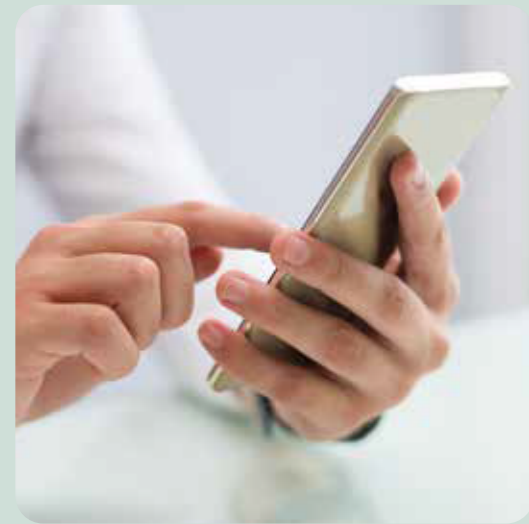


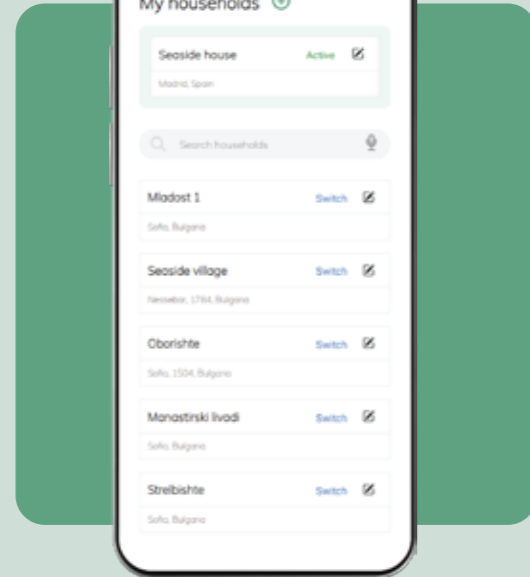
Product usage process

A step-by-step guide for Business users



Sign up in ZAYA and select subscription

1. Register with:
 - Google
 - Other Email
2. Select a subscription plan:
 - Select your subscription and billing plan – **Standard, Premium, Platinum**, depending on your needs.
 - Explore all the features for business users.



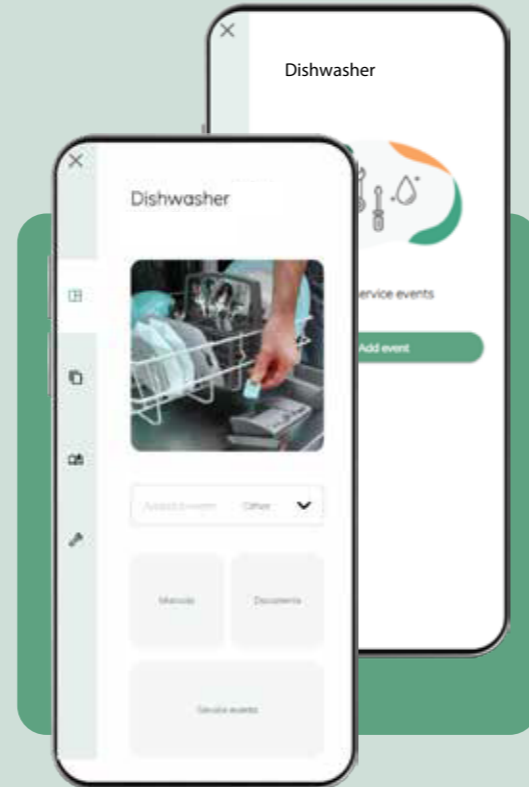
Create your households

1. Choose household name and enter location.
2. Add so many properties depending on your business plan.
3. Switch between households easy and simple.



Add new appliances

- Try the advanced search for better experience
1. Appliance type
 2. Brand
 3. Model
- Add appliance**



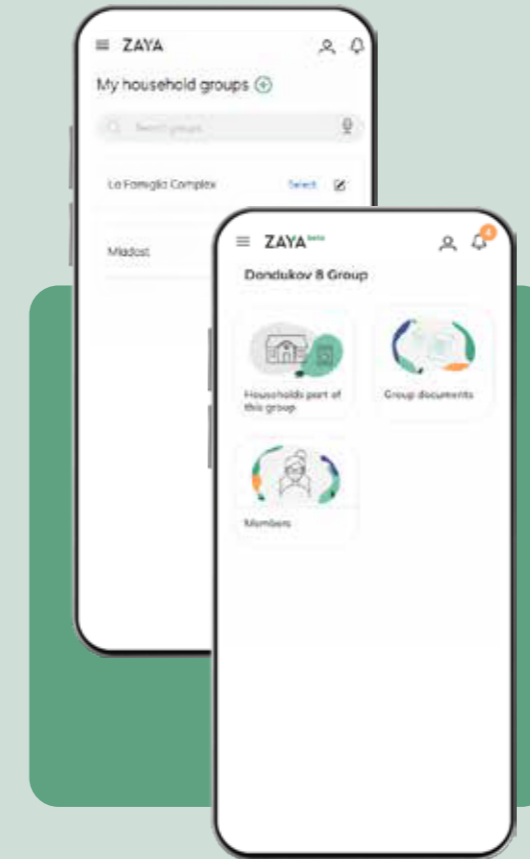
Generate digital passport of each appliance

- What's inside:
1. Manual
 - pdf file
 - cognitive services
 2. Uploaded documents like warranty & others
 3. Service events
 - Create multiply records.
 - Upload necessary service documentation.
 - Access convenient archive.



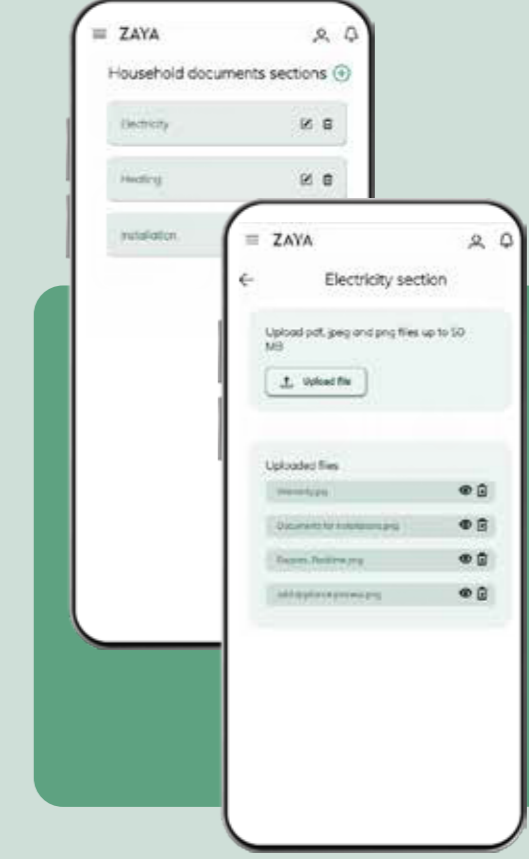
Add new members to your households

- How to do it:
- Send email invitation**
 - Share digital passports**
- Distribute roles to members:
1. Editor
 2. Viewer



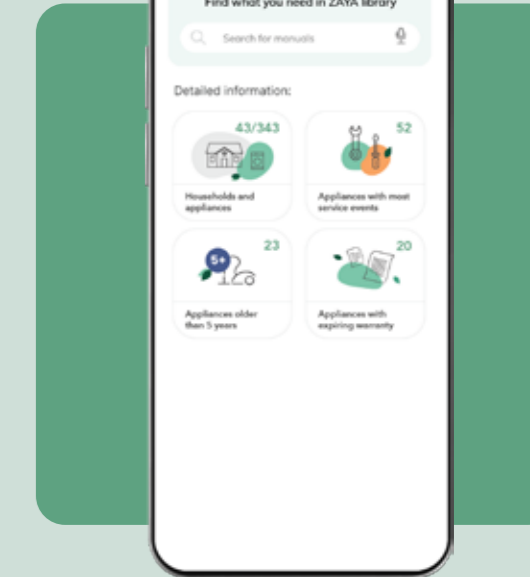
Set up household groups

- Create groups, manage members, and upload documents.
1. Name your group.
 2. Select the households you want to group.
 3. Manage group households and members.



Organize various doc. sections on group level

- Add sections with important documents visible to your household members.
1. Add new document section for the group.
 2. Upload documents up to 50 MB each.



Important data at a glance

- What's included:
1. Total number of households and appliances
 2. Number of appliances older than 9 years
 3. Appliances with expiring warranty
 4. Appliances with most service events